

The Institutional Challenge Grant: Round 4

Webinar April 2020
@wtgrantfdn

Today's Webinar

PART I

- The Institutional Challenge Grant
- Mid-Career Fellows
- Questions

PART II

- The Award and Application Process
- Resources
- Questions

Focus Areas

Supporting Research to Improve the Lives of Young People

Youth ages 5 to 25 in the U.S.

- Improve the use of research in policy and practice in ways that benefit youth
- Programs, policies, and practices to reduce inequality in youth outcomes

Institutional Challenge Grant



PARTNERSHIP

- Build a sustained institutional partnership with a public agency or nonprofit organization



RESEARCH

- Pursue a joint research agenda to reduce inequality in youth outcomes



INSTITUTIONAL CHANGE

- Create institutional change to value research-practice partnerships and their work



CAPACITY

- Develop the partners' capacity to collaborate, and to produce and use high-quality relevant research

Research Practice Partnerships

Research-practice partnerships are long-term, mutually beneficial collaborations that promote the production and use of rigorous and relevant research evidence

Long-term view

Persist beyond a single project



Relationships between institutions

Benefit both parties

Research-practice partnerships: Working together to improve outcomes for youth.

Whether you are looking to form, grow, or support a research-practice partnership, you need to know where to start and what to expect. We've got you covered with samples, and resources from successful partnerships that you can use as a one-stop shop.

WHAT IS AN RPP?

American Educational Research Journal
Month XXXX, Vol. XX, No. X, pp. 1-40
Article reuse guidelines: sagepub.com/journals-permissions
© 2018 AERA. <http://aerj.aera.net>

Under What Conditions Do School Districts Learn From External Partners? The Role of Absorptive Capacity

Caitlin C. Farrell
University of Colorado Boulder
Cynthia E. Coburn
Northwestern University
Seena Chong
University of California-Berkeley

School district central offices regularly engage with external partners in improvement efforts, but these partnerships are not always productive. Indeed, little is known about under what conditions partnerships are likely to lead to organizational learning outcomes. We conducted a longitudinal comparative case study of two departments in one urban school district central office, both working with the same external partner. Data included 131 interviews and 372 hours of observations as well as artifacts and social network data. We find that this difference in capacity and

Research-Practice Partnerships

A Strategy for Leveraging Research for Educational Improvement in School Districts

A white paper prepared for the William T. Grant Foundation
January 2013

Cynthia E. Coburn, Northwestern University
William R. Penuel, University of Colorado, Boulder
Kimberly E. Gell, Independent Researcher



Assessing Research-Practice Partnerships

Five Dimensions of Effectiveness

Eric C. Henrick
Vanderbilt University
Paul Cobb
Vanderbilt University
William R. Penuel
University of Colorado-Boulder
Kara Jackson
University of Washington
Tiffany Clark
University of Colorado-Boulder



Reducing Inequality

- Conduct research on *programs, policies, & practices that reduce inequality in youth outcomes*
 - Inequality by economic, racial, ethnic, and immigrant origins is pervasive
 - Evidence often exists on the nature and sources of inequality
 - Ways to *reduce* inequality are less well understood



Fellows

- The grant includes funds for the equivalent of two, one-year full time fellows
 - Matched support for one-full time fellow for one year
 - All fellows must be mid-career
- Mid-career fellows are necessary to extend and solidify the partnership between institutions
- Mid-career research fellows advance the research agenda
- Mid-career fellow from the public agency or nonprofit organization advances the organization's capacity to produce and use research evidence

Fellow Experiences

Current grantees have selected:

- ✓ One research fellow for 2-3 years
 - ✓ Multiple research fellows half-time for 1-2 years
 - ✓ One practice fellow to strengthen data capacity, conduct literature reviews, develop analytic skills, develop products, and share findings
-
- Juliana Garcia, Tompkins County Cooperative Extension
 - Laura Tach, Cornell University

The Opioid & Family Life Project

- Respond to increasing rates of opioid abuse and child maltreatment in low income, rural communities in New York
- Use a mixed-methods approach to understand:
 - The association between opioid misuse and child maltreatment
 - Promising interventions to mitigate child maltreatment among families struggling with substance use disorder
- Advance institutional change by:
 - Providing funding and training for faculty to conduct scholarship in collaboration with practitioners
 - Building the capacity of practitioners to use research & conduct high-quality evaluation work



Our Team

Cornell
University

Cooperative
Extension –
Tompkins County

PIs



Rachel Dunifon,
Dean



Anna Steinkraus,
Program Coordinator

Fellows



Laura Tach,
Associate Prof



Juliana Garcia,
MSW

Project

Support MSW Interns

Postdoc
PhD student

Undergrad Interns

Program Assistant

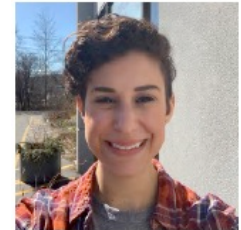
Mid-Career Fellows

**Laura
Cornell University**



- PhD in Sociology & Social Policy
- Associate Professor of Policy Analysis & Management
- Background in:
 - Poverty & social policy
 - Family sociology
 - Mixed-methods

**Juliana
Cooperative Extension –
Tompkins County**



- BA in Industrial & Labor Relations & MSW
- Family & Community Educator
- Background in:
 - Social work
 - Anti-racist work
 - Innovative program delivery methods



Laura Tach, Cornell University, fellow

Rachel Dunston, Cornell University, principal investigator

Anna Steinhilber, Cornell Cooperative Extension-Toyota County, co-principal investigator

Working Together



Monthly Team Meetings



Shared Interns, Program Assistant, Postdoc



Project Subcommittees



Community Building Activities

Fellows' Time

- CCE
 - Positions funded by contracts, which change over time
 - Grant funds 50% of salary for 2 years
- Cornell
 - Faculty appointments are 50% research & 50% teaching
 - Grant funds course release & 1-month summer salary for 2 years



Building Capacity

Activities that blur lines between research & practice

- Iterative research-practice engagement from beginning to end
- Experience writing products for both academic and practitioner audiences

Joint data collection efforts

- Develop electronic surveys on tablets for real-time data input by participants
- Community Cafes

Professional development workshops

- IDEAS Impact Framework Training, Harvard
- Strengthening Families Facilitator Training, Ithaca

Research and practitioner conferences

- National Conference on Child Abuse and Neglect
- Cooperative Extension Educator In-Service Conferences
- Rx Summit

Institutional Change



Cornell – Human Ecology

- First “pilot college” to partner with [Engaged Cornell](#)
- Provost’s Fellow for Public Engagement
- Community-engaged faculty pilot grants
- Student involvement

Cooperative Extension

- Digitize program data collection
- Templates for data reports
- Program review & other resources to share across CCE system
- CCE-wide Opioid Program Work Team
- Regular parenting email listserv

Questions?

INSTITUTIONAL CHALLENGE GRANT

The Award & Application

Institutional Challenge Grant

- \$650K for 3 years
 - ✓ with a possible 2-year renewal
 - Up to a 9-month planning period
 - The partnership's research to reduce inequality
 - Mid-career fellows (8-20 years since Ph.D. or in role)
 - Capacity-building activities
 - Indirect cost allowance of up to 15% of total direct costs
- In-kind support for one fellow for one year

Aspirations

- At the end of five years,
 - ✓ Established set of strategies that facilitate sustained research partnerships with public agencies or nonprofits
 - ✓ The public agency or nonprofit has increased its capacity to use research evidence
 - ✓ Researchers have improved their partnership skills
 - ✓ The research generated has been used in decision making and is likely to lead to improved outcomes for youth

Review Process

- Applications due September 10th, 2020 (3 pm ET)
 - Full proposal and all agreements
- Senior Staff Reviews
 - Four-page structured abstract
- Selection Committee Reviews
 - Two in-depth committee reviews
 - Selection of 3-4 finalists
- Finalists
 - Written response
 - In-person interviews

APPLICATION

Selection Committee



2020 – 2021 Competition

- Program unchanged!
- We encourage proposals from teams with African-American, Latinx, Native American, and Asian American members in leadership roles
- We welcome partnerships across a range of domains, including child welfare, mental health, housing, justice, and education
- Resubmissions welcome!

Fellows & Capacity Building

- Developing the Capacity of Fellows and Partners
 - ✓ The rubric proposed for selecting fellows ensures they will have the requisite skills to carry out the proposed work
 - ✓ There is a plan for the research fellows to significantly extend their skills as effective partners to policymaker and practitioners
 - ✓ There is a feasible plan for increasing the capacity of the public agency or private nonprofit organization to use research in decision making to improve youth outcomes

On Our Website

SELECTED RESOURCES

wtgrantfoundation.org/grants/institutional-challenge-grant

[Webinar: Applying for the Institutional Challenge Grant—Proposing Strategies to Foster Institutional Change](#)

[Partnering for Community Change: How the Institutional Challenge Grant Has Shaped Our Work](#)



Research-practice partnerships website

The Foundation's research-practice partnerships website includes guiding tips, work samples, and resources from successful partnerships on topics including using research, communicating research and engaging stakeholders, and developing agendas and agreements.

rpp.wtgrantfdn.org

Funded Partnerships (2018-2020)



Cornell University
Cornell Cooperative Extension-Tompkins
County



University Colorado-Boulder
Denver Public Schools



University of Toronto
Puerto Rico Department of Education



Boston College
United Way of Merrimack Valley and
Massachusetts Bay



Northwestern University
Evanston Township School District 202 &
Evanston/Skokie District 65



University of California Berkeley
San Francisco Unified School District

Questions?